

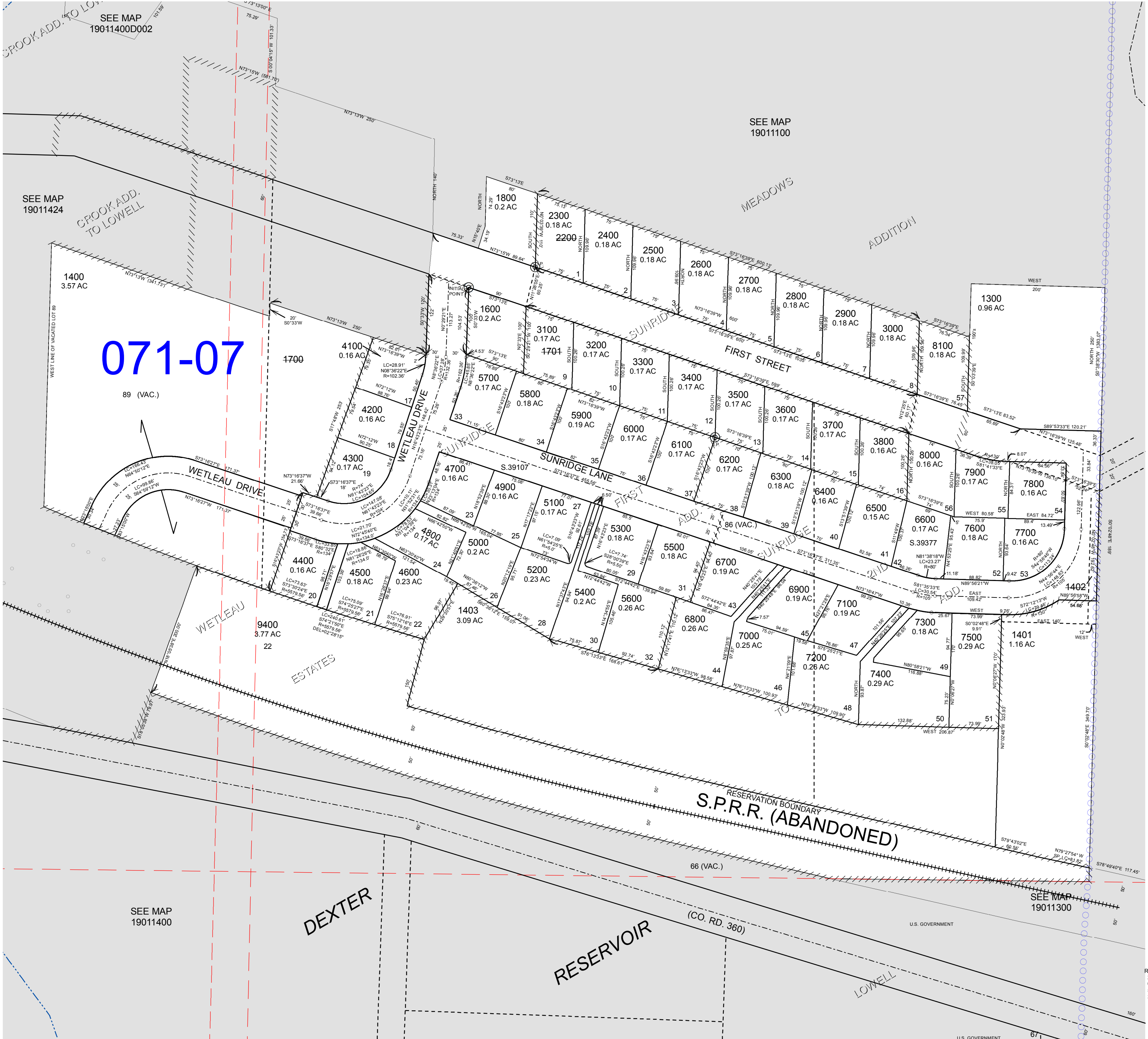
FOR ASSESSMENT AND TAXATION ONLY

DETAIL MAP NO. 1
SEC.14 T.19S. R.1W. W.M.
Lane County
1" = 100'

19011400D001
LOWELL

GIS DATA
1/18/2011 1:22:48 PM : lcatjcg

CANCELLED:
1402
1700
2200
9500
1500
1701



071-07

89 (VAC.)

SEE MAP
19011400

DEXTER

RESERVOIR

(CO. RD. 360)

LOWELL

SEE MAP
19011300

REVISIONS:
2/11/2009 - LCAT167 - DIV TL 1403 O.O. 1400
6/17/2010 - LCAT174 - TAX CODE CHANGE EPUD WITHDRAW
5/19/2008 - LCAT167 - CONVERT MAP TO GIS
3/23/2009 - LCAT167 - GRAPHICS FIX
1/18/2011 - LCAT174 - PTN OF TL 1400 TO WETLEAU RD

LOWELL
19011400D001